

Discovery Health in numbers

July 2013

Discovery Health continues to grow and attract new members to the schemes that it administers. In July, Discovery Health had more than **2.81 million** lives under management.

Total hospital costs for July were R1 034 million. Some of the major drivers of the high cost admissions were:

- **Care for premature infants** – average cost of **R721 500**
- **Transplants**, including kidney and pancreas, lung, heart and liver transplants – average costs range from **R441 000 to R595 000**
- **Long-term ventilation** – average cost of **R670 000**.

Of the top 10 highest hospital costs paid, 7 relate to long-term ventilation totalling **R18.9million** (73% of Top 10 costs).

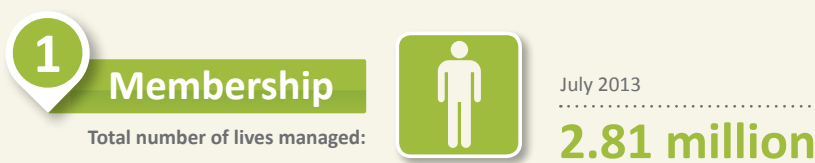
The highest cost was **R3.5 million** for a 43-year-old patient on long-term ventilation admitted for more than 116 days.

Digestive system diagnoses were the most common reason for admission (2 910), followed by caesarean deliveries (2 762) and pneumonia and whooping cough (2 743). The total cost for the top 10 admission conditions amounted to **R202 million**.

Discovery Health has over 344 350 members registered on the Chronic Illness Benefit and in total **R1.8 billion** was paid for chronic medicine over the past year. Hypertension remains the highest registered chronic condition, with 259 202 members compared to the next highest condition of hyperlipidaemia with 144 630 registered members and asthma with 84 127.

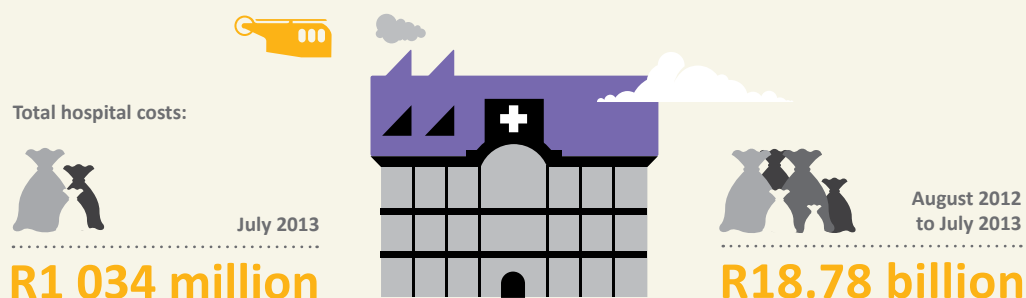
The Oncology Programme has grown in both costs and enrolled members. For July 2013, **R171 million** was spent on 36 136 members with cancer.

Glucose testing was the number 1 Vitality screening test among members with 28 900 screenings completed, followed by cholesterol testing (23 698) and HIV testing (23 556).



2 Hospital-related costs

Hospital costs represent the total cost for all authorised hospital admissions paid by the Scheme. This includes all payments to hospitals, specialists and support providers such as radiologists and pathologists.



2.1 Top 10 conditions ranked by number of admissions

All conditions are defined using Diagnosis Related Groups (DRGs) that group admissions into clinically homogeneous groups. The top conditions ranked by number of admissions are shown below.

Top conditions ranked by number of admissions (August 2012 to July 2013)

Other digestive system diagnoses with scope



30 706
2 910

Caesarean delivery



32 731
2 762

Simple pneumonia and whooping cough



26 902
2 743

Other factors influencing health status



24 795
2 669

Lens procedures



28 082
2 529

Tonsil and adenoid procedures



19 619
2 100

Circumcisions



8 315
1 905

Epiglottitis, otitis media, upper respiratory infections and laryngotracheitis



16 769
1 604

Oesophagitis, gastroenteritis and miscellaneous digestive disorders



19 273
1 595

Psychoses



15 581
1 487

Total costs

Top 10 conditions:

July 2013
R202 million

August 2012 to July 2013
R3.08 billion

2.2 Top conditions ranked by average cost

The top conditions are shown below, ranked by the average cost of admission for each of these conditions. The average cost of admission for any given condition is calculated by dividing the total cost of all admissions by the number of admissions for that particular condition.

Top conditions ranked by average cost (August 2012 to July 2013)



Premature babies smaller than 1 000g with major operations

R721 463



Critical care for long-term mechanical ventilation

R670 074



Heart transplant

R595 307



Kidney and pancreas transplant

R594 685



Lung transplant

R576 203



Premature babies between 1 000g and 1 499g with major operations

R495 355



Liver transplant

R441 194



Premature babies less than 1 000g without major operations

R326 774



HIV with ventilator or nutritional support

R322 418



Coronary bypass

R312 344

2.3 Top 10 highest hospital cost admissions

The following table shows the highest hospital costs paid in July 2013, related to admissions between August 2012 and July 2013.



Critical care for long-term mechanical ventilation

43 years old
R3 553 674
Length of stay: 116 days



Critical care for long-term mechanical ventilation

38 years old
R3 295 448
Length of stay: 132 days



Critical care for long-term mechanical ventilation

62 years old
R3 005 657
Length of stay: 146 days



Critical care for long-term mechanical ventilation

54 years old
R2 442 235
Length of stay: 110 days



Surgical procedures on the brain

47 years old
R2 416 734
Length of stay: 135 days



Procedure to treat heart blood vessel (coronary) disease using heart catheterisation (angiogram)

75 years old
R2 398 580
Length of stay: 90 days



Critical care for long-term mechanical ventilation

67 years old
R2 253 953
Length of stay: 92 days



Critical care for long-term mechanical ventilation

78 years old
R2 217 709
Length of stay: 143 days



Critical care for long-term mechanical ventilation

29 years old
R2 124 549
Length of stay: 118 days



Non-major respiratory procedures

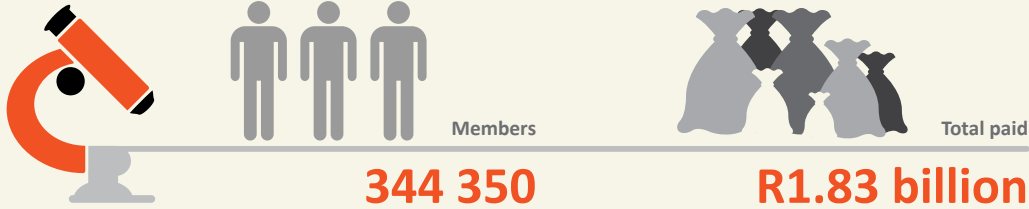
2 years old
R2 060 788
Length of stay: 150 days

3

Chronic conditions and further disease management

The table below shows the number of members claiming for registered chronic conditions, as covered by Discovery Health's Chronic Illness Benefit. The total represents the amount paid for chronic medicine over the past year.

Chronic overview



3.1 Top 10 chronic conditions as shown by the total cost to the Scheme

The chronic conditions below accounted for the largest spend on chronic medicine for the Scheme. These conditions represent those defined by the Prescribed Minimum Benefits and the additional chronic conditions covered by Discovery Health (up to 65 conditions depending on plan choice).

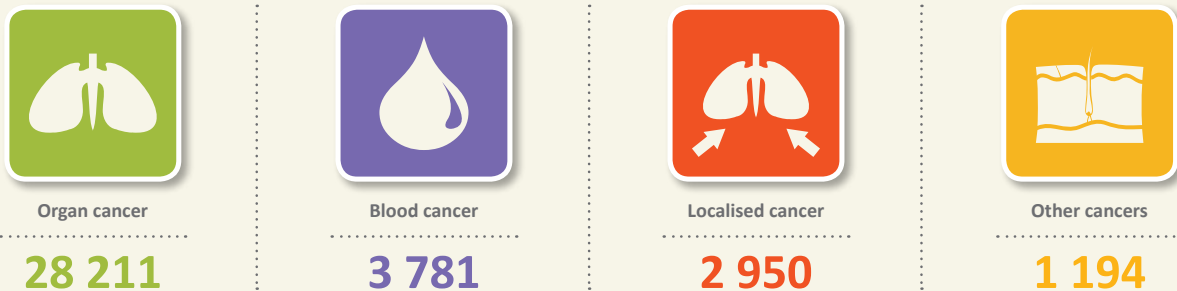
Members registered as at July 2013



3.2 Oncology Programme

The table below shows the total number of members enrolled on the Oncology Programme. The 'Total Cost' for these members is split to specifically include spend related to oncology.

Number of members on active treatment in July 2013





Oncology spend for oncology claimants

July 2013

R93 million

August 2012 to July 2013

R1.028 billion



Non-oncology spend for oncology claimants

R78 million

R1.295 billion



Total spend (oncology and non-oncology) for oncology claimants

R171 million

R2.323 billion

4

Preventive care

(July 2012 to August 2012)

July 2013

Vitality incentivises members to get actively involved in improving their health. Apart from encouraging members to exercise and lead a healthy lifestyle, Vitality also encourages the early detection of disease. The Screening and Prevention Benefit offers members access to preventive screening for a number of chronic conditions. Members are rewarded through the Vitality programme for participating in these screening tests.

Vitality screening

Glucose test



373 128

28 900

Cholesterol test



290 173

23 698

HIV test



298 272

23 556



Pap smear



142 824

10 972

Mammogram



56 416

4 597

Blood pressure test



214 101

18 594

Prostate screening



48 271

3 369

5

International Travel Benefit

The International Travel Benefit, Discovery 911 and a range of emergency service partners provide peace of mind to medical scheme members in the event of an emergency – locally and internationally. Members on all plans, except KeyCare and InHouse schemes, have cover for medical emergencies when travelling internationally. The International Travel Benefit provides cover for emergency medical expenses outside the borders of South Africa, including evacuation and medically necessary repatriation costs.

Number of International Travel Benefit calls

July 2013

692

August 2012 to July 2013

9 896

